

Stator Interturn Short Circuit Fault Diagnosis by Current Concordia Pattern Using Fuzzy For Decision Evaluation

Adapa Saikiran S.* and Deepak M. Sonje**

ABSTRACT

An early detection and diagnosis of induction motor stator short circuit inter turn fault prevents greater damage to nearby coils, core, and insulation and eventually to the motor. The presence of stator inter turn short circuit fault can be detected by analysis of park's transformed stator current Concordia patterns. Further in this paper to increase accuracy and extract features, wavelet transformation is used and for decision making fuzzy system is been trained. The proposed fuzzy approach is dependent on detailed level coefficient Concordia pattern, obtained from wavelet transformation. Experimental results integrate the aim of paper.

Keywords: Concordia pattern, fault diagnosis of induction motor, fuzzy logic, wavelet.

1. INTRODUCTION

Three phase squirrel cage induction motor plays a vital role in industries due to their high power-weight ratio, low price and easy maintenance[1]. To increase reliability early fault detection is of prime importance. The methods of fault detection and diagnosis can be classified in to two ways[1]. First method based on modeling of IM[1]. Second one based on signal measurement[1]. First one deal with certain assumptions under which uncertainties are difficult to model and numbers of equations required are more and complex to model and moreover disturbances are unable to be modeled without assumptions. Whereas signal based method measure signals compare draw features which differentiate between faults using various techniques such as time domain analysis, frequency domain, wavelet, signal processing tools etc. further many more systems are used to diagnose inter turn fault such as negative sequence impedance[1], winding function based system[3], transient analysis of IM model[4]. Among these, wavelet is more advantageous as it can deal with non-stationary signals[5]. The proposed system uses signal based method and basically for feature extraction wavelet is used and for decision evaluation fuzzy system is trained on the basis of detail level coefficient (fifth level) of park's transformed current (I_d and I_q).

2. CONCORDIA TRANSFORMATION THEORY

Defines a new set of variables, the new quantities are obtained from the projection of the actual variables on three axes one along d-axis, second along q-axis and third on stationary axis[2]. The stator current of phase 'a' considered as reference now these variables are transformed in to new one as d, q and o and the two phase equations obtained in terms of three phase are as follows.

$$I_d = \sqrt{\frac{2}{3}}I_a - \frac{1}{\sqrt{6}}I_b - \frac{1}{\sqrt{6}}I_c \quad (1)$$

* Department of Electrical Engineering G.E.S.COE, NASIK. (India), Email: saikiranadapa@gmail.com

** Department of Electrical Engineering G.E.S.COE, NASIK. (India), Email: deepaksonje@yahoo.com

$$Iq = \frac{1}{\sqrt{2}} Ib - \frac{1}{\sqrt{2}} Ic \quad (2)$$

The equations (1) & (2) are simulated in labview. and under various faulty and healthy conditions as shown in Fig.1. The evaluated results are used as input to wavelet for feature extraction.

3. WAVELET TRANSFORM THEORY

Wavelet transform works on basic principle of breaking signal in to shift and scaled version of mother wavelet[5]. Wavelet is more advantageous as it has inherent capability to reveal hidden features of waveform and perform multi-resolution analysis.

DWT is defined as

$$DWT f(m, n) = \sum f(t) \psi_{m, n}(t) \quad (3)$$

Where, $\psi_{m, n}(t)$ is mother wavelet m, n are scale and translation factor.

In dwt filter band structure is used in which the approximate level coefficient of lower level are passed through a high pass and low pass filter followed by a down sampling by 2 to compute both the detail and approximate level coefficient at higher level[5]. In this paper five level decomposition is used, chosen arbitrarily as shown in fig.2.

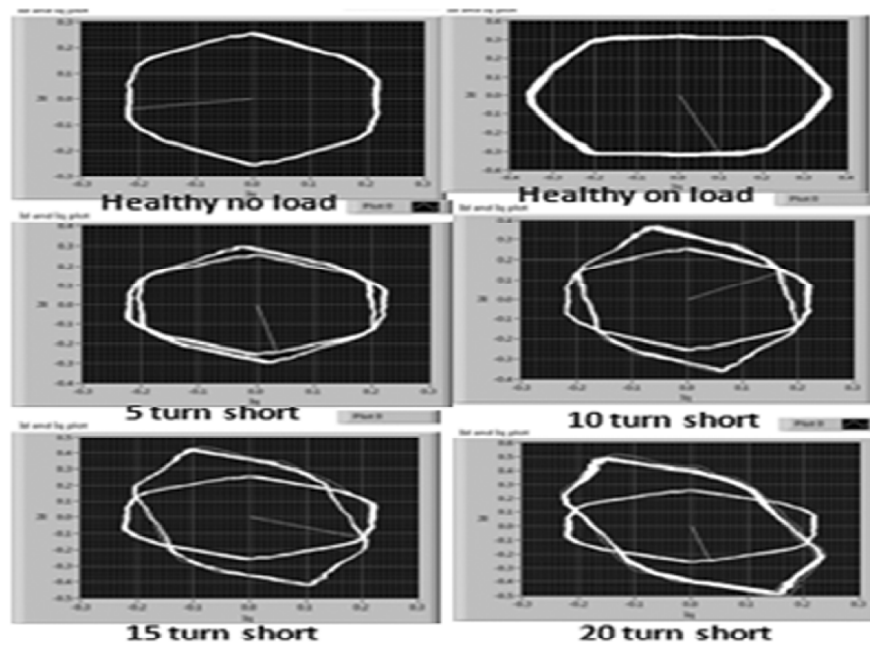


Figure 1: plots of Id and Iq for various condition under load and no load conditions.

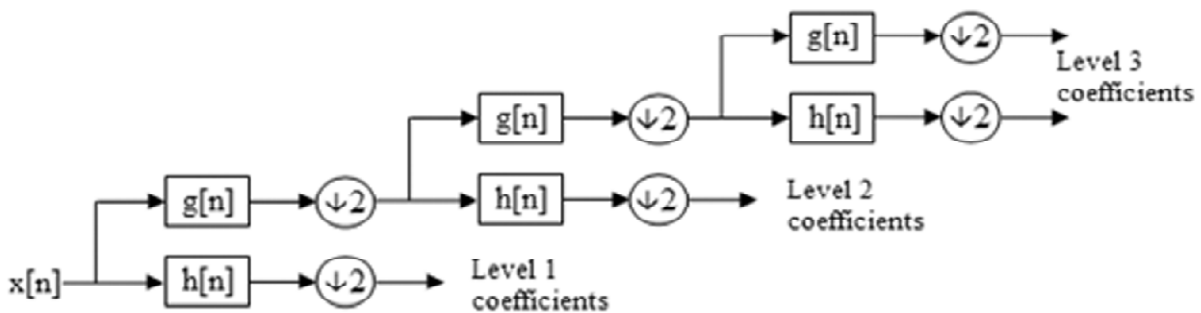


Figure 2: Wavelet decomposition.

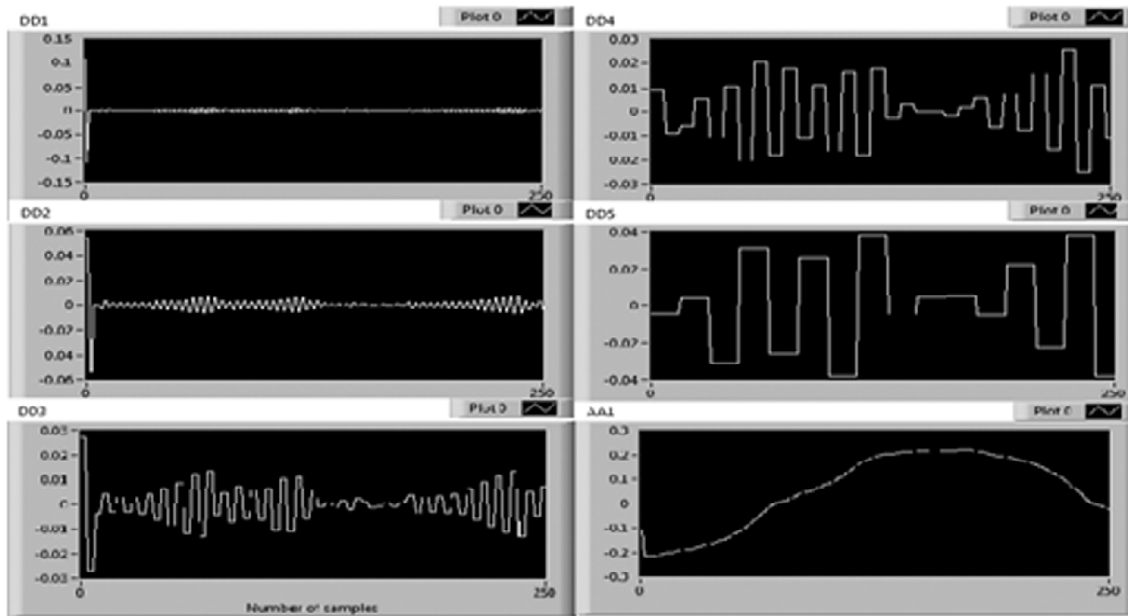


Figure 3: Detailed and approximate level coefficients level of I_d for healthy system.

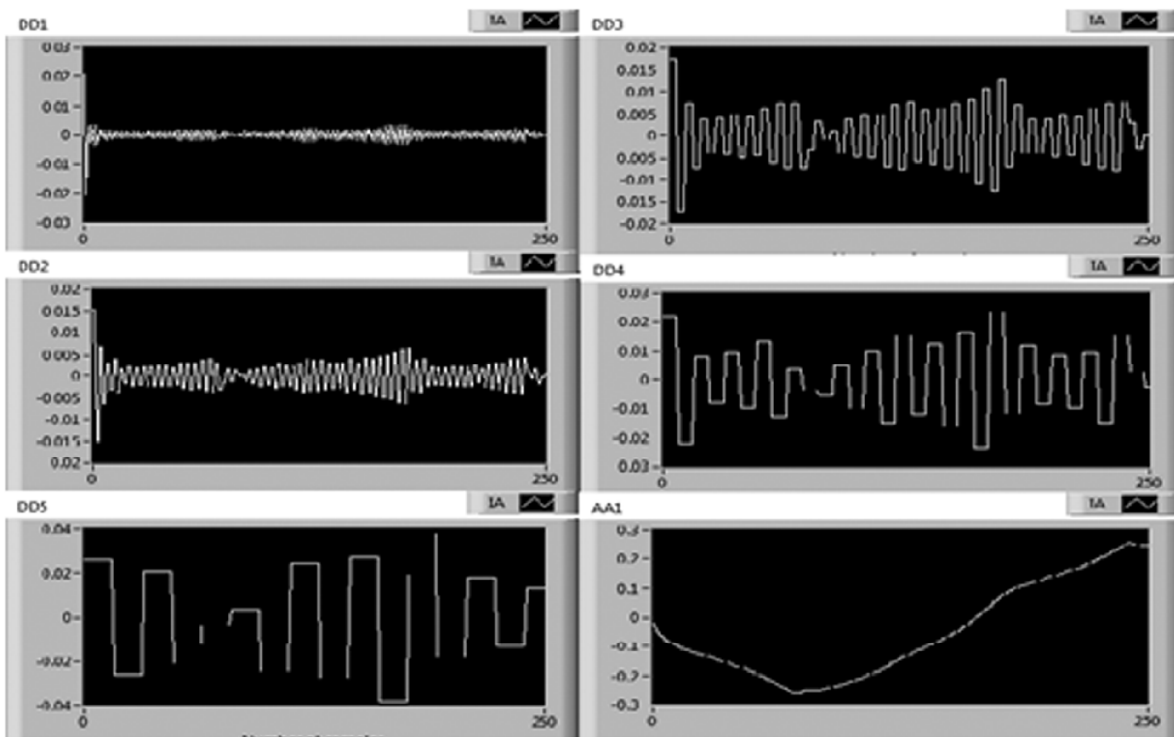


Figure 4: Detailed and approximate level coefficients level of I_q for healthy system.

Detailed and approximate level coefficients level of I_d and I_q for healthy system obtained using wavelet are as shown in fig.3. and fig.4.

4. EXPERIMENTAL SETUP

Setup consist of 3 H.P, 415 V, 4 pole, 50HZ 3 phase Induction motor with a special arrangement of stator turn available outside the motor structure for shorting them intentionally with the help of switch. Number of turns per phase is 180 with each set of tapping consisting of 5 turn and has capacity to bear 30-40 turns short circuit fault with mechanical loading arrangement as shown in Fig.5.

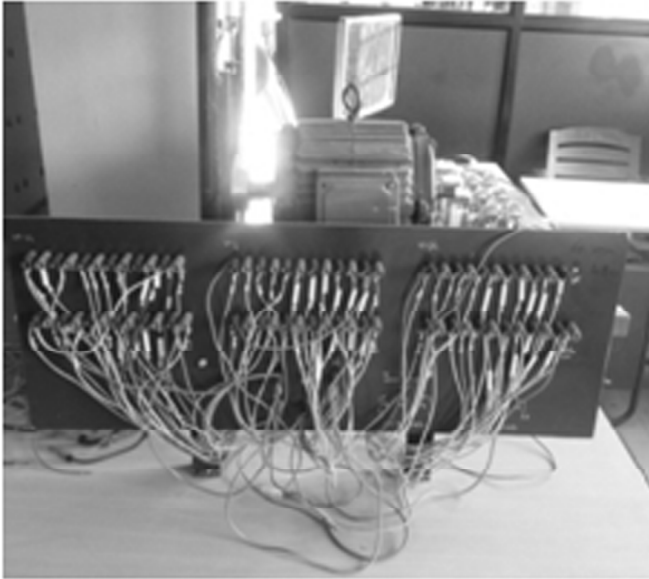


Figure 5: Experimental set up.



Figure 6: DAQ System.

To measure data and make available for analysis to computer tools “NI USB-6212” with 16 inputs, 16bit, 400KS/s multifunction input output device is used as shown Fig.6. known as data acquisition card(DAQ). The current and voltage signals are captured at sampling frequency of 16.89 KHZ with the help of NATIONAL INSTRUMENT DAQ Which is shown in Figure.6. The Different experiments are carried out on laboratory test bench in healthy condition and inter-turn short circuit with 5, 10, 15, and 20 turns short circuited.

The stator currents (I_d & I_q) at different turns short circuited are measured and analyzed by NI DSO and wavelet respectively such as 5turn, 10turn, 20turn, 25turn at the sampling frequency rate of 16.89khz.

5. FEATURE EXTRACTION USING DWT

The data measured by NI is given as input to wavelet (db) for extracting features for various fault conditions .5th level detailed coefficients of both I_d and I_q are plotted as shown in fig. And are analyzed for no load as well as for 50% load on IM as shown in fig.7. In this paper features extracted are PVM of dd5, I_d/I_q , Inclination Angle as shown in Table.1. and Table .2.

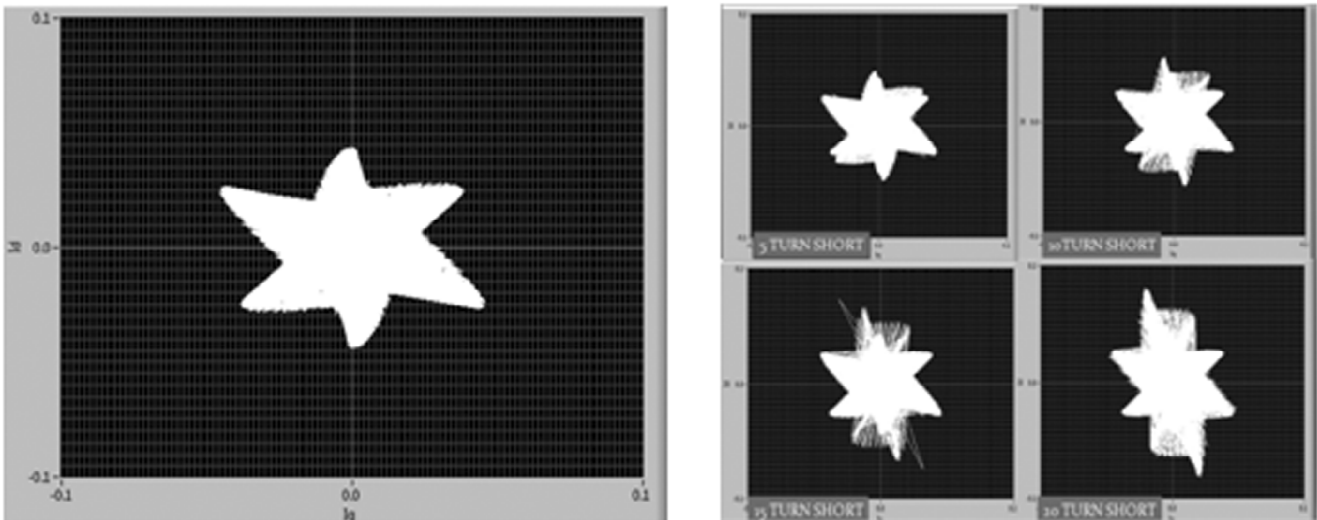


Figure 7: Plot of I_d & I_q of dd5 (no load).

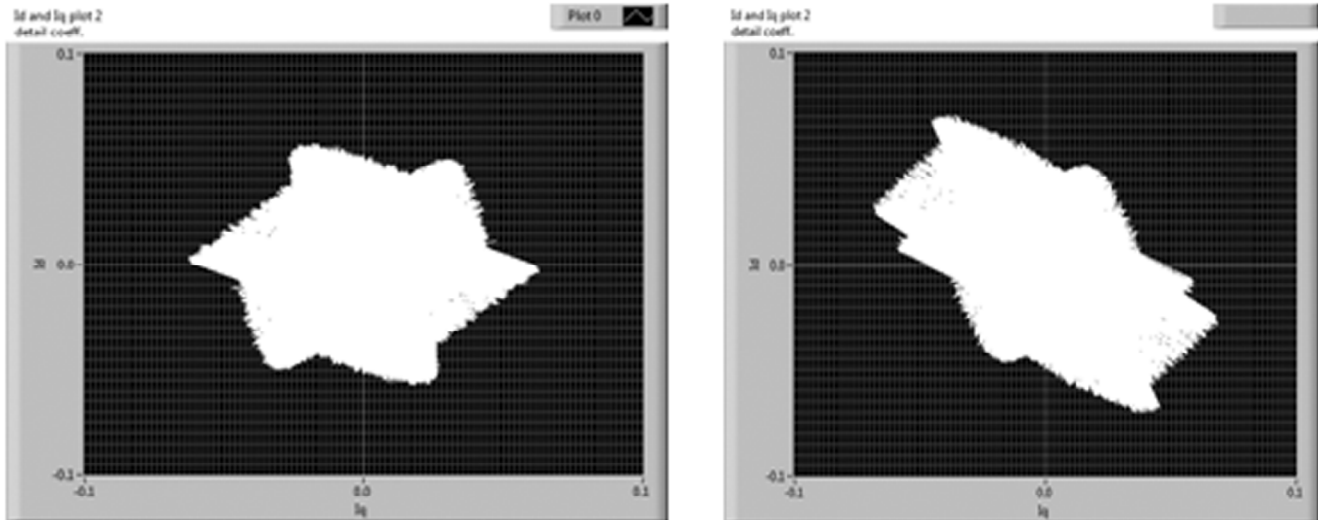


Figure 8: Plot of Id & Iq of dd5 (on load).

A. Table1
Extracted feature (NO LOAD)

| Sr. No. | PVM | Id/Iq | Inclination Angle | Turn short |
|---------|-----------|----------|-------------------|------------|
| 1 | 0.0634764 | 1.03019 | 45.85 | 0 |
| 2 | 0.0670289 | 0.922553 | 42.69 | 5 |
| 3 | 0.0728082 | 0.795811 | 38.51 | 10 |
| 4 | 0.0868795 | 0.620498 | 31.81 | 15 |
| 5 | 0.0950122 | 0.597069 | 30.84 | 20 |

A. Table 2
Extracted feature (ON LOAD)

| Sr. No | PVM | Id/Iq | Inclination Angle | Turn short |
|--------|-----------|------------|-------------------|------------|
| 1 | 0.0849088 | 1.10462725 | 47.846 | 0 |
| 2 | 0.08100 | 0.9123 | 44.872 | 5 |
| 3 | 0.712154 | 0.84215 | 42.503 | 10 |
| 4 | 0.691254 | 0.79654 | 34.258 | 15 |
| 5 | 0.54789 | 0.658741 | 26.214 | 20 |

6. FUZZY LOGIC

Fuzzy depends on set of rules specified in its database and are used as input to make decision are also known as linguistic rules as approach of fuzzy based system works as human brain with respect to rules specified[7]. fuzzy based decision are accurate only if linguistic rules are build with greater analysis and also on number of member functions.

6.1. Design of Fuzzy Fault Detector

The extracted features are given to fuzzy as input to discriminate between stator inter turn fault severity ranging between 0-1. here 'Inclination Angle' and 'PVM' are used as inputs to fuzzy to decide FSI. Certain set of rules are derived with available data for both no load and 50% load condition which will act as look up table for fuzzy (mamdani). With the help of this data (set of rules) fuzzy is trained and able to evaluate fault severity index[7]. FSI specified for number of turns short circuited is as given in the table.

Set of rules for no load and load conditions are evaluated separately for the fuzzy. No load current drawn by IM is approximately 30% of full load which discriminate between load and no load condition.

7. RESULTS

To define set of rules for fuzzy , under each fault (stator inter turn) condition 10set of readings were taken to decide range of member functions(IA and PVM) And also with healthy system as reference and all the data is fed as input to fuzzy and verified experimentally as shown in fig. With the increase in number turn short circuit FSI increases linearly which calibrates the aim of paper.

Fig. shows FSI for major fault i.e. in this paper 20 and above turn short circuited.

Table 3
Fault Severity Index for healthy, less, more fault.

| Sr. no. | FSI | TYPE OF FAULT |
|---------|---------|--|
| 1 | 0 | HEALTHY |
| 2 | 0.1-0.5 | LESS FAULT(5, 10, 15 turn short.) |
| 3 | 0.5-1 | MORE FAULT(20, 25 and above turn short.) |

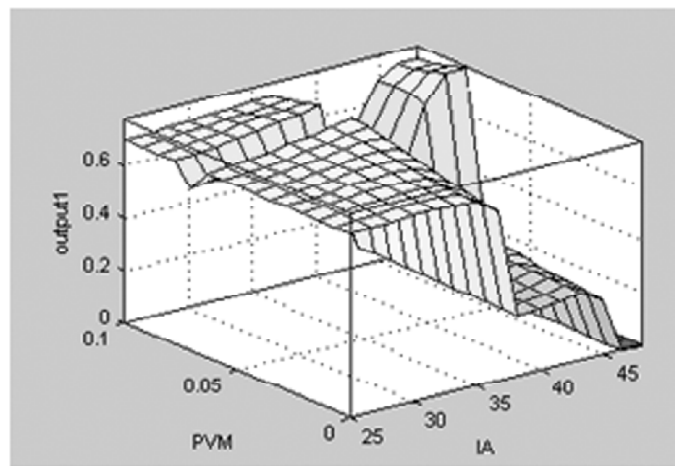


Figure 9: Graph of FIS, IA, PVM (fuzzy surface viewer).

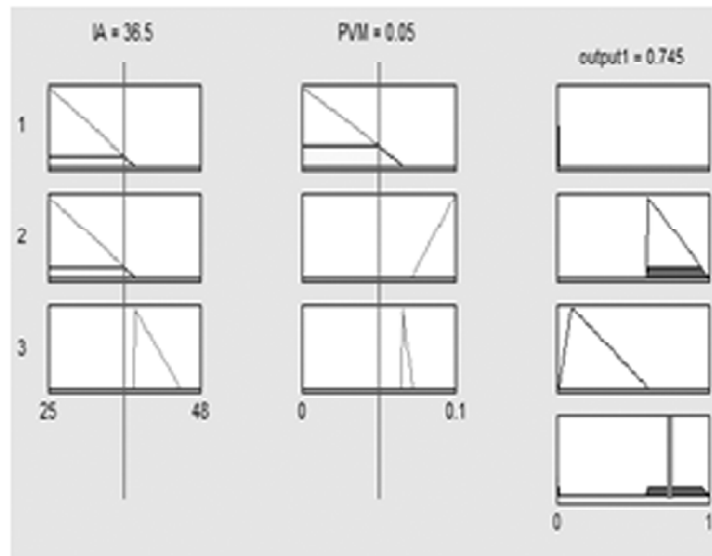


Figure 10: FSI indicator for major fault.

8. CONCLUSION

This paper has proposed a methodology by which IM stator inter turn fault severity can be diagnose. The proposed methodology was based on the parks transformation theory .Obtained Id and Iq spectrums were analyzed for feature extraction using wavelet transform and detailed level coefficient were plotted and the available data was as fed as input to fuzzy for decision evaluation. The results were verified both online and offline and the proposed system succeeded to calculate severity index of inter turn fault. Further the proposed algorithm with evaluated member functions with same technique can be implemented for different types of fault, and with the help of energy obtained for detailed level coefficients using parsvel's theorem too faults can be differentiated.

REFERENCES

- [1] Neelam Mehela A PHD thesis on "Condition Monitoring and Fault Diagnosis of Induction Motor using Motor Current Signature Analysis" (2010).
- [2] Krause PC (1986) Analysis of electric machinery. Mc-Graw Hill, New York.
- [3] P S Bhimra "Generalized theory of electrical machine".Mc-Graw Hill.
- [4]] H.A.Toliyat ,T.A. Lipo, "Transient Stator ,Rotor Bar and End rings Fault" IEEE Transactions On Energy Conversion, Vol. 10, 1995, pp. 241-247.
- [5] G. G Yen , K Lin, "Wavelet Packets Feature Extraction for Vibration Monitoring" IEEE Transactions on Industrial Electronics 2000.
- [6] DONG Mingchui , CHEANG Takson , SEKAR Booma Devi†, CHAN Sileong "Fuzzy-Expert Diagnostics for Detecting and Locating Internal Faults inThree Phase Induction Motors" TSINGHUA SCIENCE AND TECHNOLOGY ISSNÀÛ1007-0214ÀÛ13/18ÀÛpp817-822 Volume 13, Number 6, December 2008.
- [7] F. Zidani M.E.HBenbouzid, D Diallo, M.S. Nait Said, "Induction Motor Stator Fault diagnosis by Current Concordia Pattern based Fuzzy Decision System". IEEE Transaction on Energy Conversion 2003 pp. 469-475.
- [8] Cusido J Rosero, JA Orlega, JA Garica, A.L.Romeral, " Induction Motor Fault Detection by using Wavelet decomposition on dqo components" Industrial Electronics 2006, IEEE Symposium on Publication date 9-13 July 2006 pp. 2406-2411.